

Sudoku

Table of Contents

- 1 Menu Options
 - 1.1 New game
 - 1.2 Help once
 - 1.3 Reset game
 - 1.4 Solve
 - 1.5 Block invalid moves
 - 1.6 Show invalid moves
 - 1.7 Level
 - 1.8 Clear
 - 1.9 High score
- 2 Related Plugins
- 3 Download more plugins

Sudoku, also known as Number Place or Nanpure, is a logic-based placement puzzle.



- The aim of the puzzle is to enter the digits 1 through 9 in each cell of a 9x9 grid made up of 3x3 sub-grids (called "regions") so that each row, column, and region contains exactly one instance of each digit. A set of clues, or "givens", constrain the puzzle such that there is only one way to correctly fill in the remainder.
- For more information on history, strategy and analysis of Sudoku, please visit the [Sudoku](#) page on Wikipedia.

Menu Options

New game

The New game menu button starts a new game. as in the above screenshot.

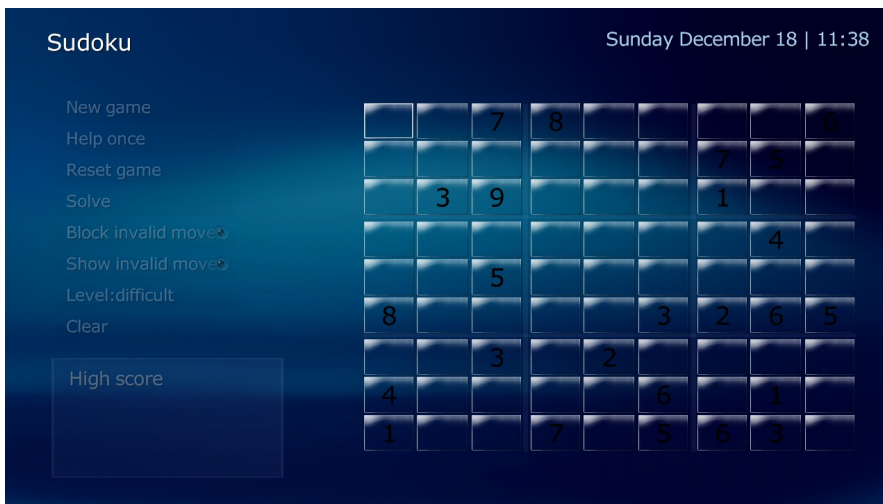


To fill in a square with a number, move the highlight to the square you want to fill in and select it. A list control will appear with the choices 1-9 (numbers to fill in) and 10 to clear the square of any previous value. You may also use buttons 1 - 9 on the remote control or keyboard.

The chosen number may not always appear in the square; see description of invalid moves button below.

Help once

Select Help Once to fill in one square at random with the correct number (shown in white).



Reset game

Clears the grid of all numbers entered by the user. The squares that were filled as clues to start the game remain (shown in black).

Solve

Shows the solution to the puzzle. The numbers in black are the clues to start the game; numbers in red are the squares that were empty at the start.



Block invalid moves

When the user tries to select a number that does not belong in the square, the plugin will not display the choice in the grid. Block invalid moves can not be selected at the same time as Show invalid moves.

Show invalid moves

When the user tries to select a number that does not belong in the square, the plugin will display the choice in the grid. Show invalid moves can not be selected at the same time as Block invalid moves.

Level

Choose the level of difficulty:

- kids
- easy
- medium
- difficult

Clear

Removes all numbers from the grid.

High score

High Scored keeps track of your time to rate how quickly you can solve the puzzle.

Related Plugins

- Tetris

Download more plugins

