

TV-ServerPlugins

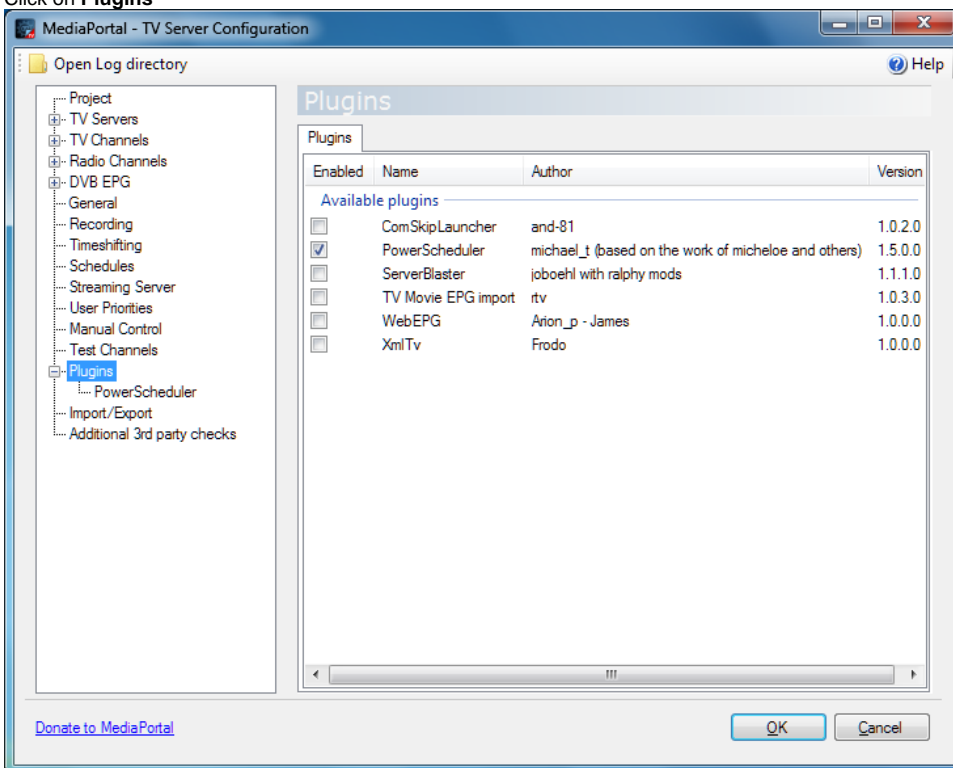
Overview

How to configure TV-Server plugins.

Plugin Settings

If you have installed TV-Server:

1. Start **TV-Server Configuration**
2. Click on **Plugins**



3. Check the plugin(s) you wish to enable.
4. Click **Plugins** in the navigation pane to expand the node and click on the plugin you wish to configure.

Any plugins included with MediaPortal or extensions you may have installed will be included in the list of plugins.

The following plugins are included with TV-Server:

- [TV-ServerPlugins](#)
 - [ComSkip Launcher](#)
 - [Power Scheduler \(1\)](#)
 - [ServerBlaster](#)
 - [TV Movie EPG Import](#)
 - [WebEPG Plugin](#)
 - [XmlTV Plugin](#)

For documentation of TV-Server extensions, see [Extensions > Plugins > TV-Server Plugins](#)