

# Tray Launcher

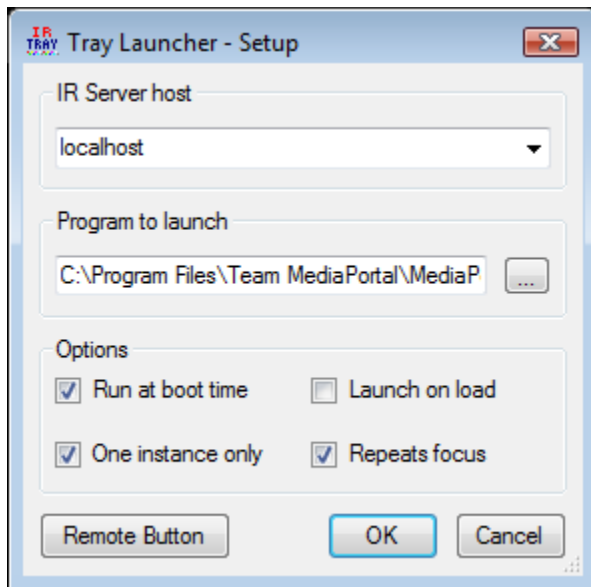
On 20 Sep 2010, *chefkoch* suggested that this page or content is incomplete and needs to be expanded and rewritten

## Introduction

Tray Launcher is a small application that loads into the System Tray and monitors the remote control to launch an application when the designated start button is pressed.

You can also launch the application by right-clicking the tray icon and selecting "Launch"

## Configuration



**IR Server Host** This represents the IP address of the machine, where InputService is running. **Program to Launch** Specifies the path to the target application, which is started when the defined button is pressed. **Run at boot time** Indicates if TrayLauncher should be started when system is booted. **One instance only** Start the target program only once. If already running, do not start it again. **Launch on load** Start the target program, when TrayLauncher is started. **Repeats focus** If target program is already running, set focus to current instance. **Remote Button** Click it to map a remote button for starting the program.

## Map a Remote Button

